

The adventures of





Charlotte the Marmot, an educational trail for children

The Municipality of Finhaut and the Regional Centre for the Study of Alpine Populations invite you to follow Charlotte the Marmot on the Emosson site to the hut of Vieux-Emosson. This is where the path, leading to the famous footprints left by the dinosaur ancestors (additional section, optional), starts. Charlotte is ready to seduce you thanks to some games, questions and experiences spread all along the way: they will allow you to discover all the richness of the site.

This trail has been specially designed for children aged 6 to 12 years old. To participate, simply stop by the nearby tourism office and pick up Charlotte's brochure (the trail map and the answer sheet). You will also receive the marble to play at place 1. Upon return, you will receive the answer sheet in exchange for the marble.

Charlotte wishes you a nice walk!
Be careful... do not start your trail without a pencil.
Be careful along the path; we are in the mountains, keep an eye out!

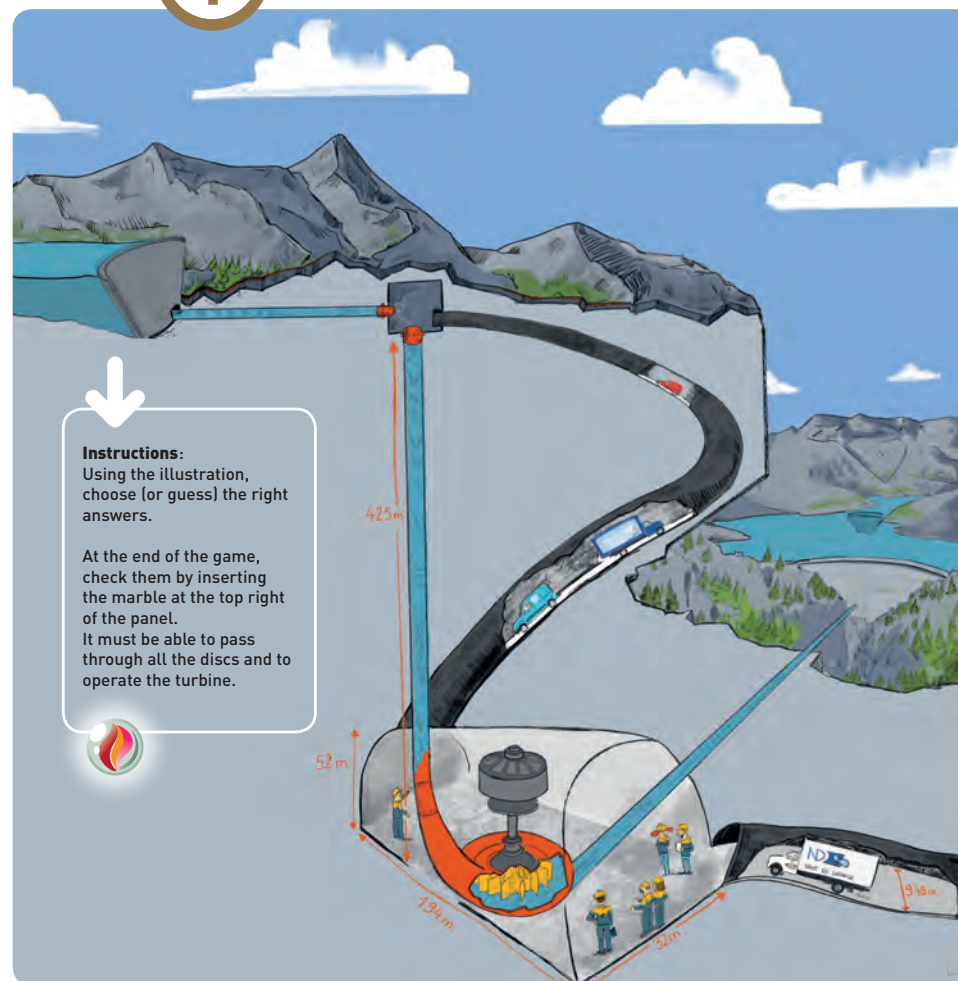
Practical information

Distance: 9 km loop
Running time: approx. 1h 30 from the Gueulaz pass to the hut of Vieux-Emosson (one-way), and as much on the way back. Count one extra hour to solve the games of Charlotte.
Difficulty level:
- Easy (3h hike): the trail runs the length of the dam, and then it climbs a steady slope by following the road. From places 8/9, near the hut, retrace your steps (without passing through places 10 and 11).
- Medium (3h hike): from the hut, follow the path climbing without difficulty, before coming back down by the valley of Veudale.
- Hard (5h 30 hike): complete the entire trail from the Gueulaz pass until the place with the footprints (approx. a 14 Km round-trip), partly on a mountain trail.
Recommended period: From June-July until October (according to the weather).

For further information: www.charlottelamarmotte.ch



The hydroelectric site of Emosson



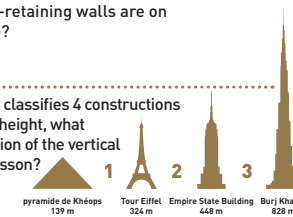
Instructions:
Using the illustration, choose (or guess) the right answers.

At the end of the game, check them by inserting the marble at the top right of the panel.
It must be able to pass through all the discs and to operate the turbine.



How many water-retaining walls are on the Emosson site?

On this image that classifies 4 constructions according to their height, what would be the location of the vertical well in Vieux-Emosson?



The water runs a turbine in the machinery cavern (underground power plant), which is as long as several football fields: 2, 3 or 4?

Which way does the water never follow?

1. Vieux-Emosson → power plant → Emosson
2. Emosson → power plant → Vieux-Emosson
3. Vieux-Emosson → Emosson

Does the underground route allow the crossing of two bikes, jeeps and lorries?

The waters of the dams come from:



At the end of the game, do not forget to blur the disks for the next players!





Discover how some prints left 240 million years ago are still visible on the Emosson site.

Playing rules:

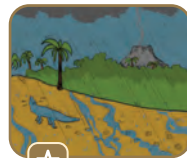
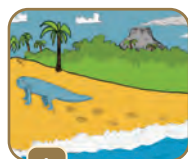
- Read the first script sequence (1) and find among the 9 nearest pictures the one that corresponds to the explanation.
- The answer illustration is accompanied by a symbol. Write it down on your leaflet and then check by turning the wheel clockwise.
- Repeat until you reach sequence 6.
- Finally, decode the symbols thanks to the read key on the right. You will discover thereby the author of these prints on the Emosson site.

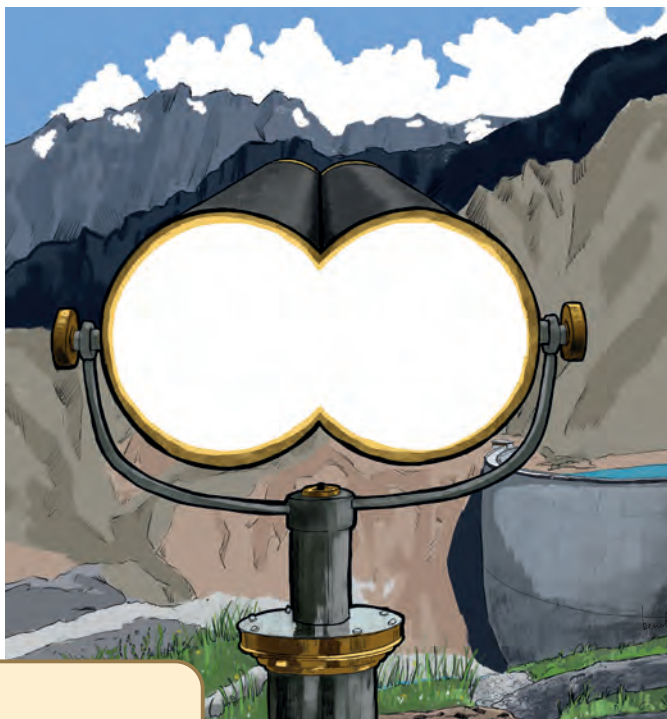
The read key

* L	○ O	⊂ E	: N	\ V	≈ K
+ A	□ S) M	- U	> B	♥ I
x P	△ R	= T	/ Q	< C	☆ X

Script

- 240 million years ago, continents were linked each other. The site of Emosson is by the sea.
- On the sand of the beach, some animals leave few prints on the ground.
- The moist sand dries up rapidly. A layer of sand, protecting the prints, will cover it.
- Then some sediment layers (sand, mud...) cover the prints again. Under this weight, the prints will become hard as rocks.
- Millions of years later, the prints are at more than 2,000-meter altitude.
- The prints finally reappear on the surface because of the erosion and the global warming.





BONUS question

There is a mistake in this illustration.
To find it, compare the drawing with what you
see through binoculars.

Answer: The curve of the dam wall is not in
the right direction.

Find out the adventures
of Charlotte the Marmot
on the following educational trails:

